

HORIZONTAL CONTROL STATEMENT

COORDINATE SYSTEM:

THIS PROJECT IS LOCATED ENTIRELY WITHIN THE ANCHORAGE BOWL 2000 ADJUSTMENT, A LOCAL SURFACE GRID COORDINATE SYSTEM EXPRESSED IN U.S. SURVEY FEET UNITS DEVELOPED BY THE ALASKA DEPARTMENT OF TRANSPORTATION.

BASIS OF COORDINATES:

THE BASIS OF COORDINATES IS NGS STATION O'MALLEY, LOCATED NEAR THE INTERSECTION OF THE NEW SEWARD HIGHWAY AND O'MALLEY ROAD. SAID STATION HAS ANCHORAGE BOWL 2000 COORDINATES OF 303939.2310 N, 353362.5446 E. U.S. SURVEY FEET.

BASIS OF BEARINGS:

THE BASIS OF BEARINGS IS A LOCAL PLANE BEARING BETWEEN NGS STATION O'MALLEY AND NGS STATION LOOP 2 USE RM 3 1964. NGS STATION LOOP 2 USE RM 3 1964 BEARS N 01°43'26.4" E A DISTANCE OF 49488.4476 FEET FROM NGS STATION O'MALLEY. NGS STATION LOOP 2 USE RM 3 1964 HAS ANCHORAGE BOWL 2000 COORDINATES OF 353405.2778 N, 354851.3982 E. U.S. SURVEY FEET

TRANSLATION PARAMETERS:

TO CONVERT THE LOCAL COORDINATES TO NAD83 (92) STATE PLANE U.S. FOOT COORDINATES, TRANSLATE USING +2,296,868.6878 N USF, +1,312,517.4904 E USF, AND SCALE USING 0.9998910192.

BASIS OF VERTICAL CONTROL

ELEVATIONS ARE BASED A MOA BENCHMARK

NAME = MOA 13 (ID# 01475)

ELEV. = 141.24 FT. USKH HELD VALUE (MOA Record = 141.28 FT. - NOT HELD)

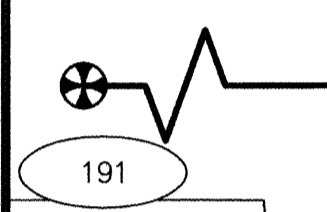
DESC. = 1/2" ANCHOR BOLT WITH A 2" DIA. WASHER IN THE NORTH FACE OF A CONCRETE BLOCK BUILDING OCCUPIED BY STEPHAN'S TOOL RENTAL: 9760 OLD SEWARD HIGHWAY.

ELEVATIONS ARE BASED A MOA BENCHMARK

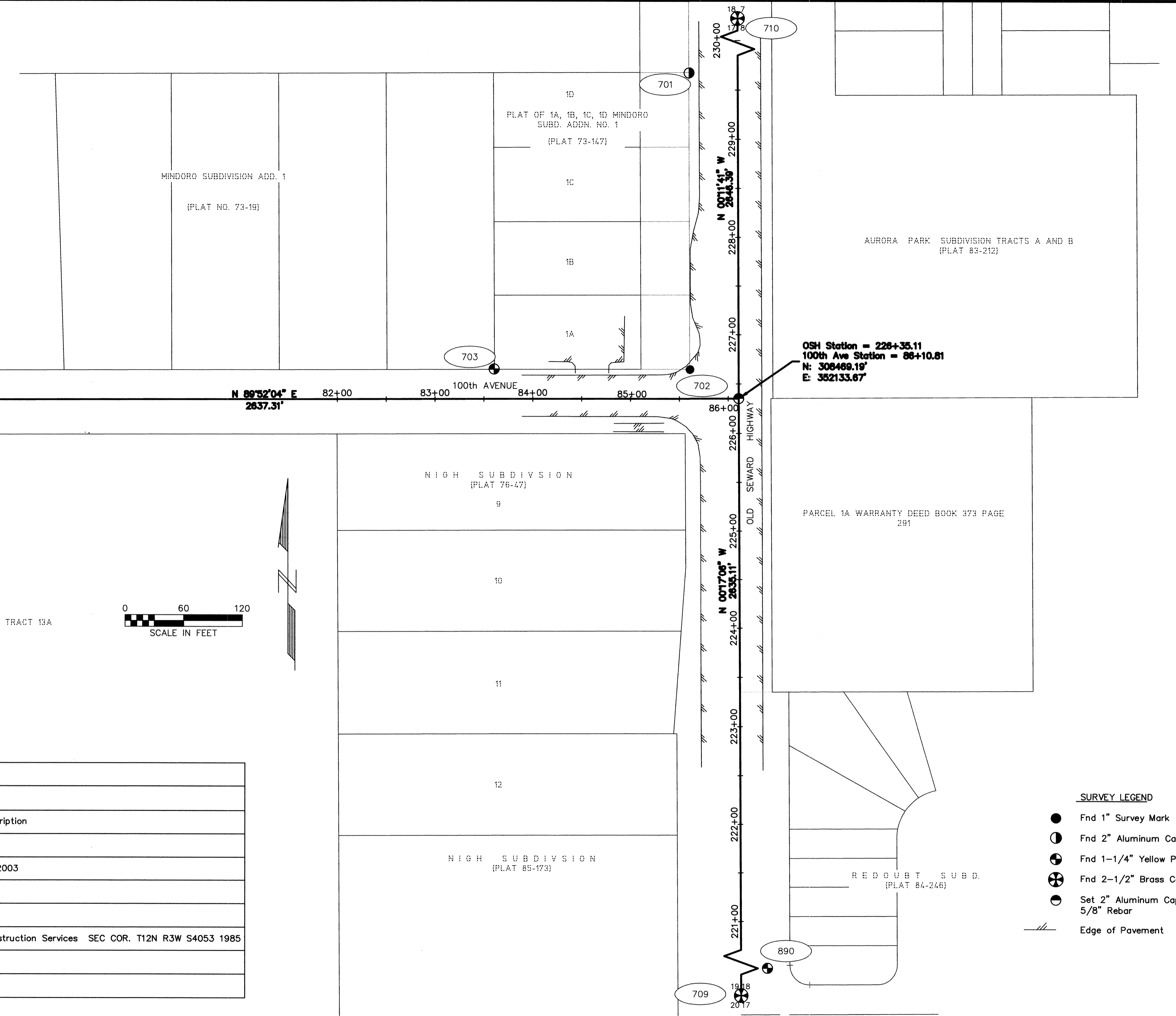
NAME = MOA 16 (ID# 01479)

ELEV. = 138.76 FT.

DESC. = 1/2" ANCHOR BOLT WITH A 2" DIA. WASHER IN THE SOUTHEAST CORNER OF A METAL SIDED BUILDING OCCUPIED BY NATIONAL OILWELL: 10330 OLD SEWARD HIGHWAY.



ALASKA RAILROAD RIGHT OF WAY



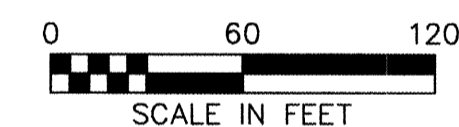
OSH Station = 226+35.11
100th Ave Station = 86+10.81
N: 308469.19'
E: 352133.67'

SURVEY NOTES

1. It is the responsibility of the contractor to verify the position of the horizontal and vertical control as shown hereon.
2. The field survey was performed by USKH, Inc. from August 1993 to February 2007. Field survey information for this project is located in USKH, Inc. field books 3243, OS1, 04-04, 05-01 & 06-01.

HORIZONTAL CONTROL POINTS

Pt. #	Old Seward Highway Alignment		100th Avenue Alignment		Northing	Easting	Description
	Station	Offset	Station	Offset			
191			59+73.50	0.00	308463.11	349496.36	Fnd 2" Aluminum Cap: 1/4 COR LS-6923 2000
701	229+67.55	49.80 L			308801.46	352082.74	Fnd 2" Aluminum Cap: PND MC TRC L1D S7624 2003
702	226+64.69	49.76 L	85+61.02	29.52 L	308498.60	352083.81	Fnd 1" Survey Mark
703			83+60.56	30.29 L	308498.91	351883.35	Fnd 1-1/4" Yellow Plastic Cap: LS6091
709	200+00	0.00			305834.11	352146.78	Fnd 2-1/2" Brass Cap in Mon Case: Classic Construction Services SEC COR. T12N R3W S4053 1985
710	252+81.51	0.00			311115.57	352124.67	Fnd 2-1/2" Brass Cap in Mon Case: No Markings
890	220+52.21	26.98 R			307886.43	352163.55	Fnd 1-1/4" Yellow Plastic Cap: AK DOT 1992



SURVEY LEGEND

- Fnd 1" Survey Mark
- Fnd 2" Aluminum Cap
- ⊕ Fnd 1-1/4" Yellow Plastic Cap
- ⊗ Fnd 2-1/2" Brass Cap
- Set 2" Aluminum Cap on 5/8" Rebar
- Edge of Pavement

FIELD BOOKS	BM NO.	LOCATION	ELEV.	DATA	DRAWN BY	CHECKED BY	DATA	DRAWN BY	CHECKED BY	REV	DATE	DESCRIPTION	BY	REV	DATE	DESCRIPTION	BY	
DESIGN: 06-01	MOA 13	9760 Old Seward Highway	141.24'	BASE	JDE	DWH	TELEPHONE											
STAKING:	MOA 16	10330 Old Seward Highway	138.76'	TOPOGRAPHY			ELECTRIC											
ASBUILT:				PROFILE			CABLE TV											
				SANITARY SEWER			TRAFFIC SIGNAL											
				STORM SEWER			DESIGN											
				WATER			QUANTITIES											
				GAS			MUN. FINAL CHECK											

USKH
ARCHITECTURE • ENGINEERING
LAND SURVEYING • PLANNING

PROJECT MANAGEMENT AND ENGINEERING DEPARTMENT

04-22 100TH AVENUE AT OLD SEWARD HIGHWAY SIGNALIZATION

SURVEY CONTROL SHEET

SCALE: 1"=60' DATE: APRIL 2007 GRID: SW2431, SW2531, SW2432, SW2532 SHEET 4 of 29

FILE NO. —